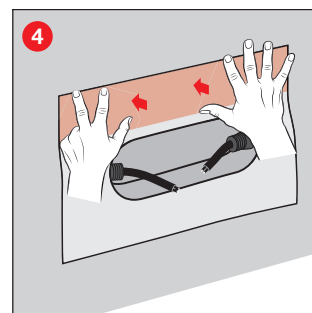
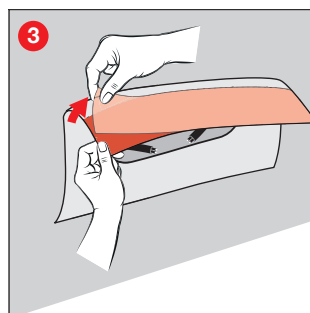
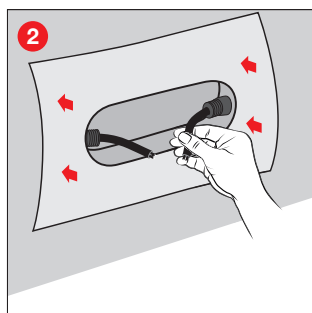
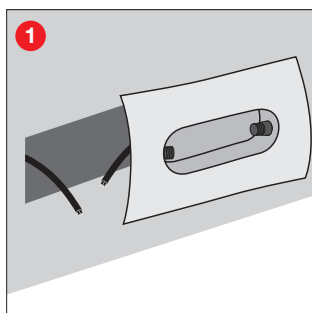




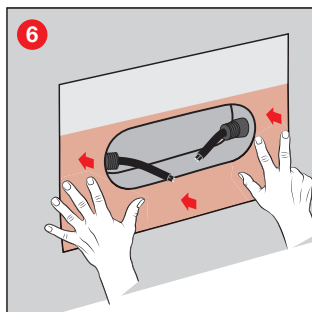
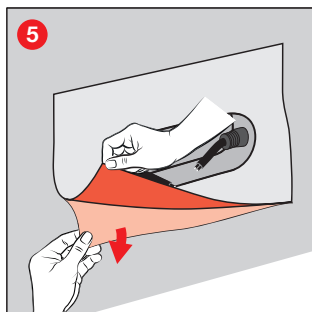
Assembly instructions



Cut the cable at an angle and pierce through the membrane of the integrated SEALplugs.

Remove the upper part of the protective film.

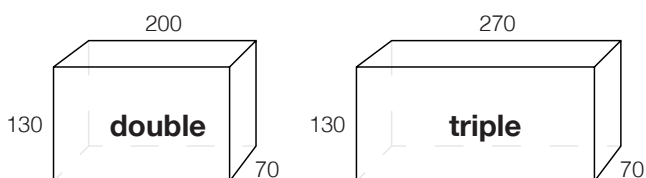
Press the upper part of the adhesive collar firmly into place.



Remove the lower part of the protective film.

Press the lower part of the adhesive collar firmly into place.

Required cut-out in mm in wall/ foil/ insulation:



Instructions for use:

The surface must be dry, load-bearing and free of dust and release agents. Avoid folds and creases. The diameter of the selected sleeve must have the right dimension for the cable bushing. Absorbent and porous substrates such as concrete, plaster, wood fibre boards etc. must be treated in advance with EISEDICHT® BUBI LF adhesive primer or EISEDICHT® spray primer. In case of doubt, carry out a bonding test.