

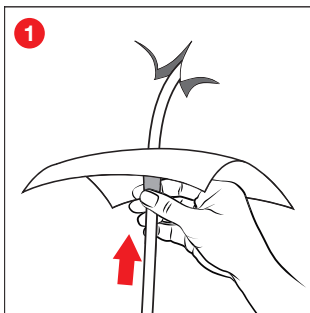
Universal

For all cable sleeves and
pipe collars

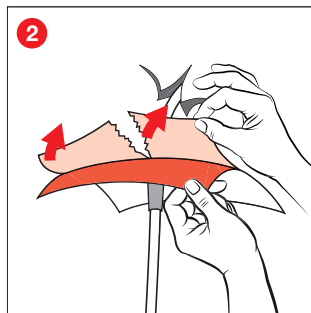
EISEDICHT®
EASY. SAFE. SEAL.

Assembly instructions

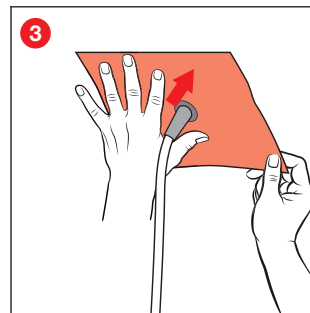
Cable sleeves:



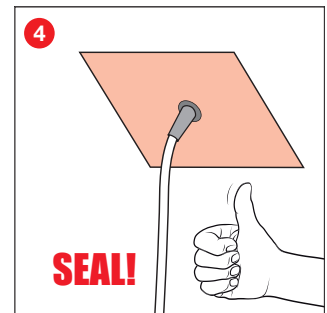
Pull the sleeve over the cable.



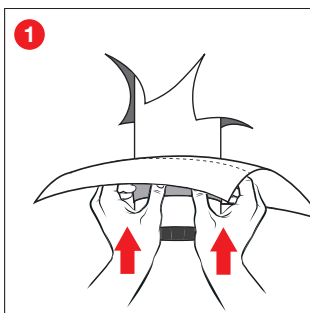
Remove the protective film.



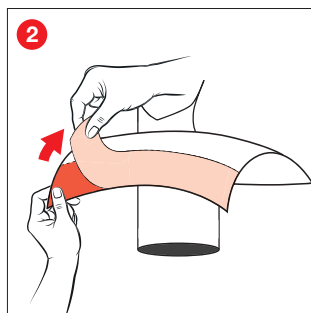
Press the adhesive collar firmly
into place.



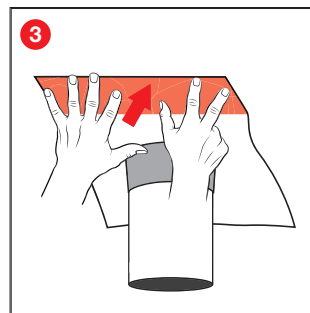
Pipe collars:



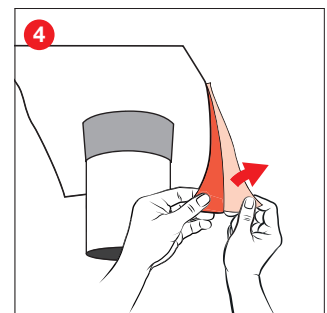
Pull the sleeve over the pipe.



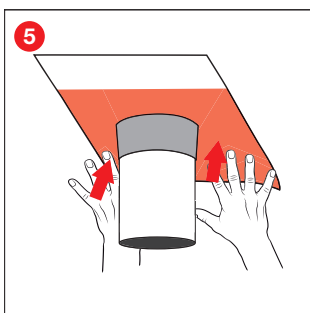
Remove the upper part of the
protective film.



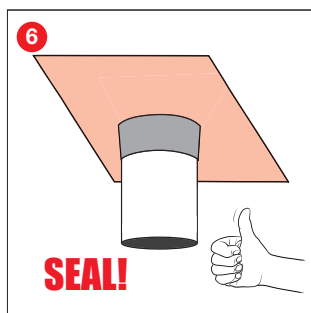
Press on the upper part of the
adhesive collar firmly.



Remove the lower part of the
protective film.



Press on the lower part of the
adhesive collar firmly.



Instructions for use:

The surface must be dry, load-bearing and free of dust and release agents. Avoid folds and creases. The diameter of the selected sleeve must have the right dimension for the cable bushing. Absorbent and porous substrates such as concrete, plaster, soft wood fibre boards etc. must be treated in advance with EISEDICHT® BUBI LF adhesive primer or EISEDICHT® spray primer. The sleeves are talcum coated at the factory. If there is a lack of lubricity, please use the enclosed talcum bag or our silicone spray and rework the inner grommet or the bushings. In case of doubt, carry out a glue test.

Note on fleece-butyl sleeves:

In order to achieve airtightness, it is necessary to apply the fleece-butyl adhesive collar.

The information in these installation instructions is given to the best of our knowledge, based on the results of practical experience and tests carried out. Check for yourself whether the product is suitable for your purposes. No one is authorised to make recommendations and assurances on our behalf that go beyond the contents of our information sheets. We reserve the right to make changes and further developments to our products.