

CornerSEAL - Outside corners

GasSTOP

Tyvek®

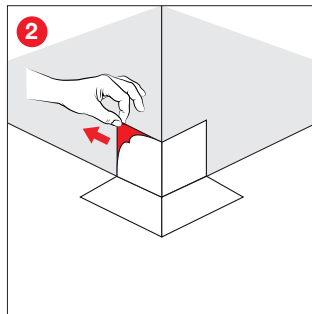
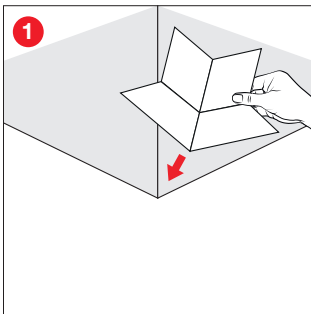
Fleece-Butyl

Alu-Butyl

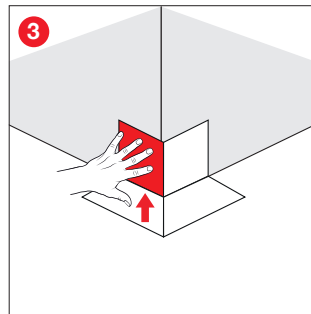
EISEDICHT[®]
EASY. SAFE. SEAL.



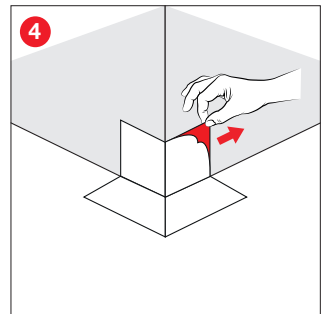
Assembly instructions



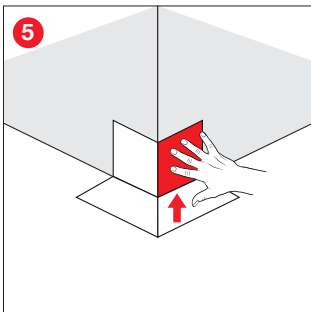
Remove the protective film from behind a wall-mounted adhesive surface.



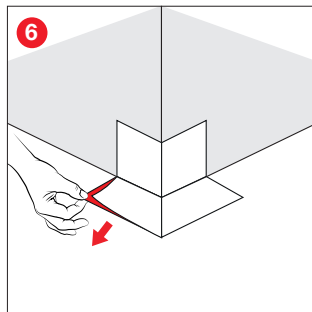
Press firmly on the adhesive surface on the wall side.



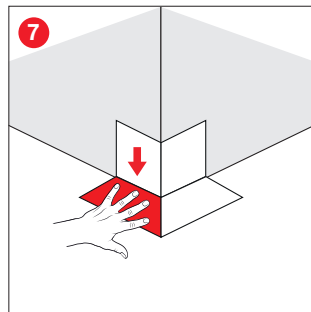
Remove the protective film from the other wall-side adhesive surface.



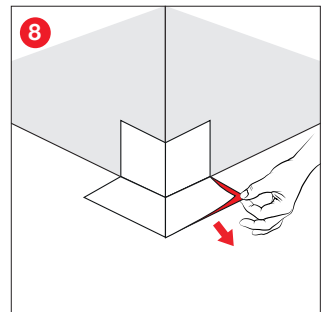
Press firmly on the adhesive surface on the wall side.



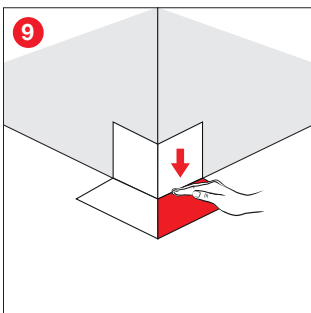
Remove the protective film from under a floor-lying adhesive surface.



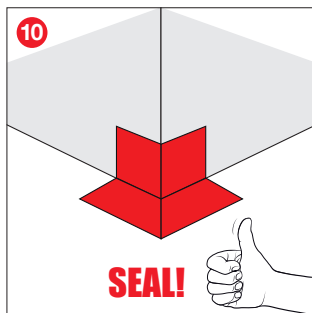
Press down firmly on the adhesive surface on the bottom.



Remove the protective film from under the other floor-lying adhesive surface.



Press down firmly on the adhesive surface on the bottom.



Press the surfaces and edges firmly with a squeegee.

Instructions for use:
The surface must be dry, load-bearing and free of dust and release agents. Avoid folds and creases. Absorbent and porous substrates such as concrete, plaster, soft wood fibreboard, etc. must be treated in advance with EISEDICHT® BUBI LF Adhesion Primer or the EISEDICHT® Spray Primer. In case of doubt, carry out a bonding test.

Note on fleece-butyl adhesive collars:
To achieve airtightness, it is necessary to plaster over the fleece-butyl adhesive collar.

The information in these installation instructions is given to the best of our knowledge, based on the results of practical experience and tests carried out. Check for yourself whether the product is suitable for your purposes. No one is authorised to make recommendations and assurances on our behalf that go beyond the contents of our information sheets. We reserve the right to make changes and further developments to our products.