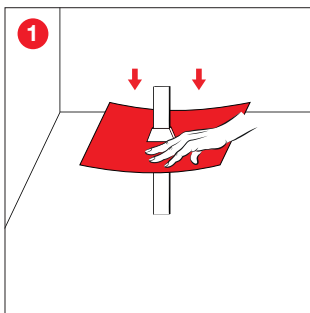
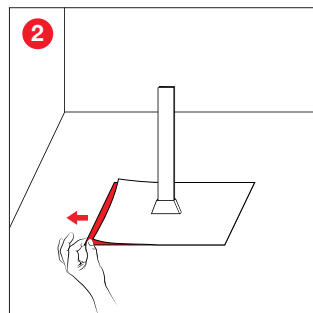




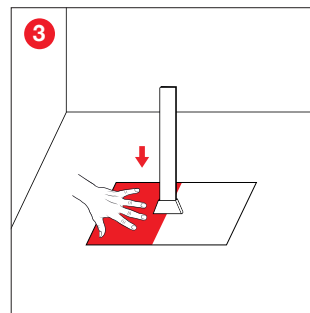
## Assembly instructions



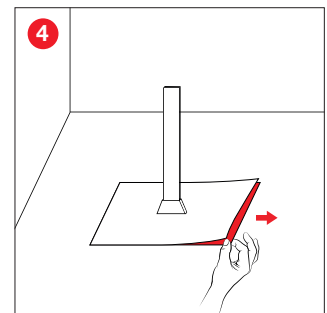
1 Pull the sleeve over the earthing strap.



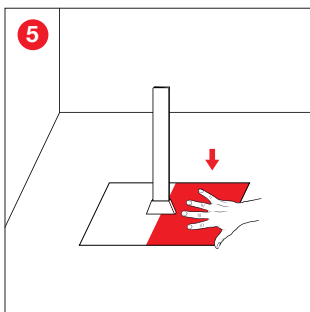
2 Remove the protective film from under one side of the adhesive collar.



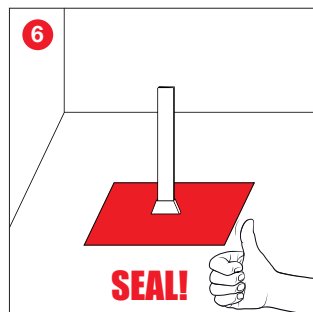
3 Press the adhesive surface firmly.



4 Remove the protective film from under the other side of the adhesive collar.



5 Press the surfaces and edges firmly with a squeegee.



**SEAL!**

### Instructions for use:

The surface must be dry, load-bearing and free of dust and release agents. Avoid folds and creases. Absorbent and porous substrates such as concrete, plaster, soft wood fibreboard, etc. must be treated in advance with EISEDICHT® BUBI LF Adhesion Primer or the EISEDICHT® Spray Primer. In case of doubt, a bonding test must be carried out. The sleeves are talcum coated at the factory. In case of insufficient lubricity, please use the enclosed talcum bag or our silicone spray and rework the inner grommet or the penetration. In the case of bituminous sheeting, the sanding and/or protective film must be removed, e.g. by heat. When pulling over the sleeve, make sure that the edges of the earthing strip are burr-free and slightly rounded.